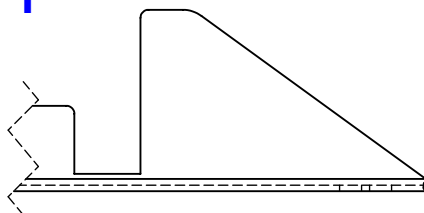
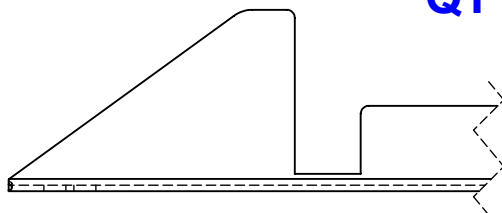


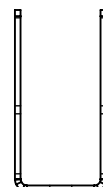
FP-CLL4-TUBE
FRONT SUPPORT, CLL-4, CLL-6
DRAWING # 90-1804-21

QTY: 1

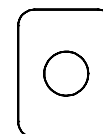


REVISIONS			
REV.	DESCRIPTION	DATE	APPROVED
A	REVISED TO NEW DWG FROM 10-1818 C	1/21/13	

1999-2010 CHEVY/GMC 40" or 56" CAB TO AXLE SINGLE/DUAL WHEEL



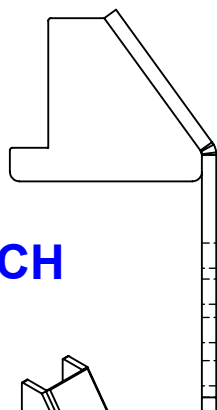
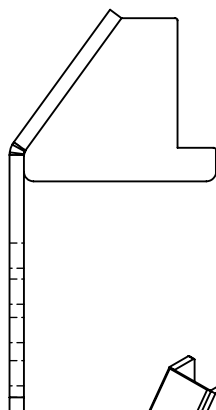
FP-CLL2-7
LEVEL LOCK, FRONT REINFORCING PLATE
DRAWING #90-2805



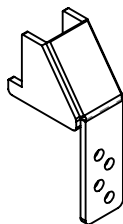
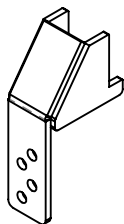
QTY: 4

CLL4-3 DRIVER SIDE
REAR BRKT DRIVER SIDE CLL-4
90-1804-28

CLL4-3 PASSENGER C SIDE
CLL4-3 PASSENGER
DRAWING # 90-1804-28

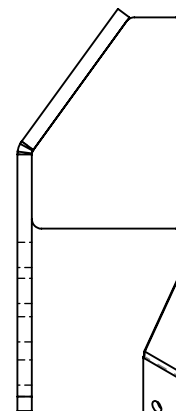


QTY: 1 EACH

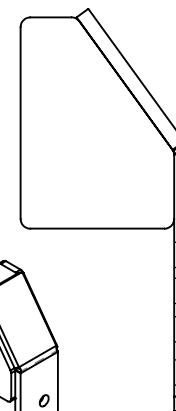
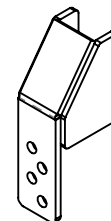


CLL4-2 C DRIVER SIDE
DRIVER SIDE CENTER BRK CLL-4
DRAWING # 90-1804-24

CLL4-2 PASSENGER C SIDE
PASSENGER SIDE CENTER BKT CLL-4
DRAWING # 90-1804-24



QTY: 1 EACH



MISCELLANEOUS HAREWARE		
DESCRIPTION	LENGTH	QTY:
5/8 x 1-3/4 FLANGE BOLT		6
FI 1/4 x 3	2-1/4"	4 FOR RISER KIT
FI 1 x 1-1/4	3-1/4"	2 FOR RISER KIT
NYLON LOCK NUT 5/8		6

PROPRIETARY AND CONFIDENTIAL
THE INFORMATION CONTAINED IN THIS
DRAWING IS THE SOLE PROPERTY OF TRIPLE
C INC. ANY REPRODUCTION IN PART OR
AS A WHOLE WITHOUT THE WRITTEN
PERMISSION OF TRIPLE C INC. IS PROHIBITED.

DIMENSIONS ARE IN INCHES
TOLERANCES:
FRACTIONAL $\pm 1/16$
ANGULAR: MACH ± 1 BEND \pm
TWO PLACE DECIMAL ± 010
THREE PLACE DECIMAL ± 005

MATERIAL ---
DO NOT SCALE DRAWING

NAME	DATE
DRAWN HEATH	12/8/11
PART #	
ASM #	CLL-4

COMMENTS:
**LEVEL LOK,
CLL-4**

P.O. BOX 248,
SABETHA, KS 66534



SIZE	DWG. NO.	REV.
A	90-1804	A
SCALE: 1:6	WEIGHT: 52.21	SHEET 1 OF 1